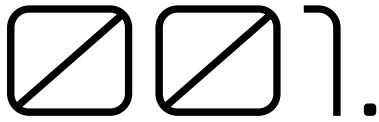


LAVORO[®]
ENGINEERING LIFE

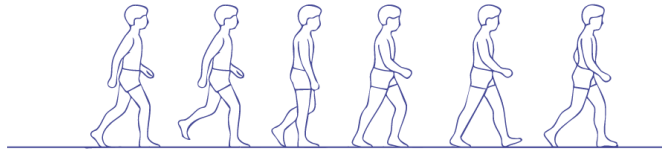
NEW PRODUCTS

STRATOS
□□□

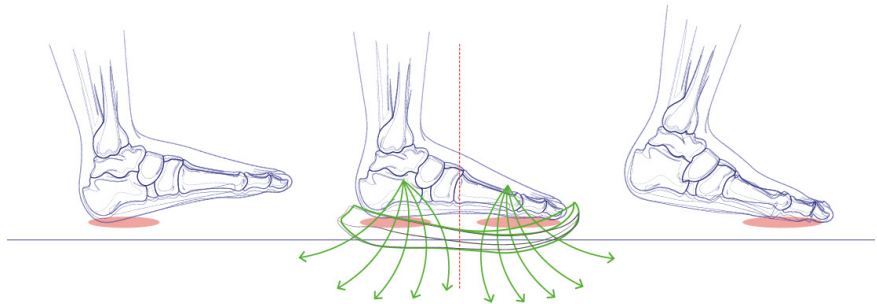
2026 COLLECTION



HOW DO WE WALK ?

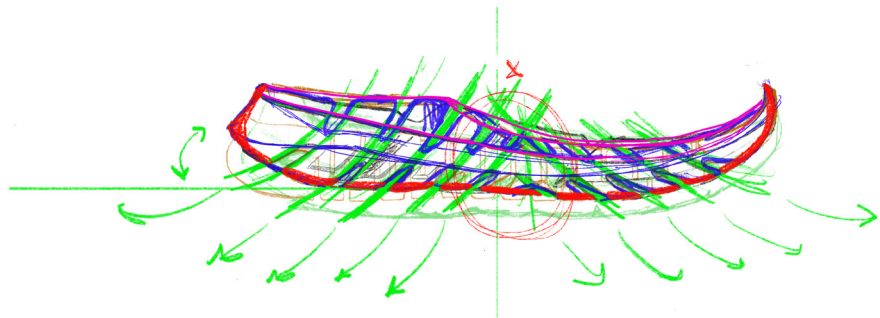


Understanding how the human foot moves is the starting point for designing better safety footwear. Walking is a complex sequence of contact, load, balance, and propulsion - and every phase places different demands on the foot and the shoe.



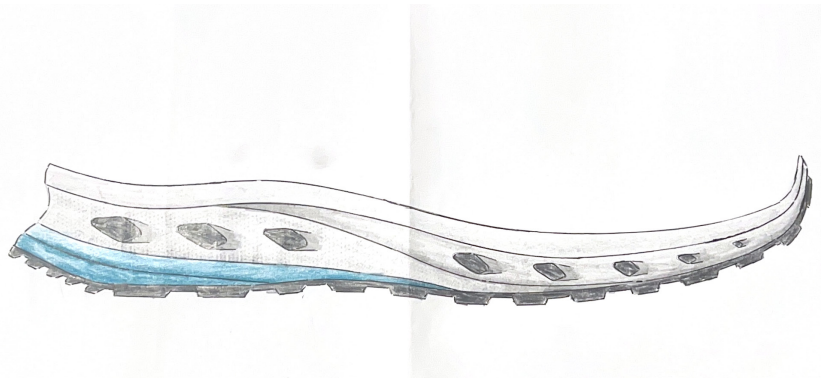
Through biomechanical studies, we analyzed pressure points, foot strike, flexibility zones, and the natural rolling motion of the step. These drawings are not abstract concepts; they are direct translations of movement.

This research guided the development of our new STRATOS sole: perforated in the heel to improve comfort and impact absorption, and cleated in the forefoot to enhance grip, flexibility, and natural movement. Every groove, cavity, and profile responds to how workers actually walk, stand, and move throughout the day.



From biomechanics to sketches to sole, understanding motion allows us to create safety footwear that supports the body, reduces fatigue, and performs where it matters most - on the ground.

Know more:
spodos.pt



TECHNOLOGIES

NEW TECH



MULTI-SECTION INJECTION



greater stability



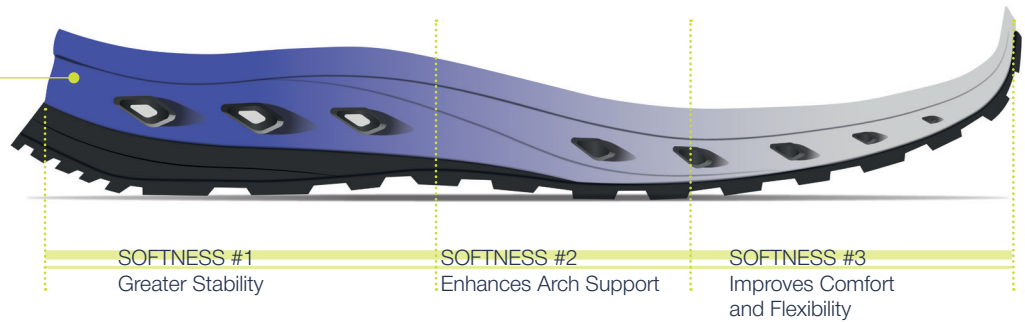
enhances medial arch support



improves comfort

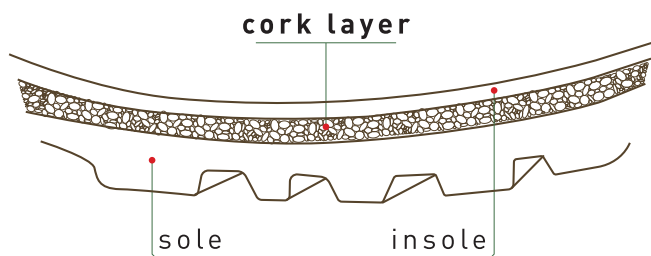
Direct injection process with different softnesses. One fully bonded unit with tailored properties by area.

UP TO 3 DIFFERENT SOFTNESSES ONLY IN THE MIDSOLE



CLIMA CORK SYSTEM

Clima Cork System creates the perfect environment inside your shoes. The cork layer between the sole and the insole keeps your feet cool in summer and warm in winter. The cork allows the creation of a kind of "footprint", favours its adaptation to the shoe and contributes to the reduction of fatigue, by benefiting the uniform distribution of the weight.



WHAT ARE THE BENEFITS?

FOR THE USER

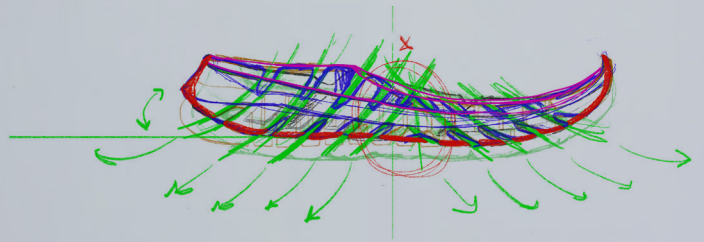
- Thermal Control
- Reduction of Fatigue
- Impact Absorption
- Comfort
- Weight Distribution

FOR THE PLANET

- Renewable Resource
- Biodegradable
- Recyclable
- Ecosystem Support
- Carbon Capture

STRATOS

000



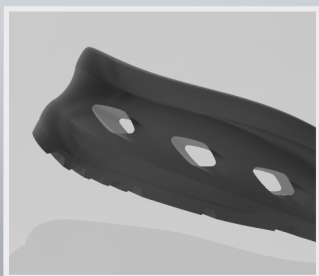
/ CLEATED SOLE /

GREATER FLEXIBILITY
GREATER WEIGHT DISTRIBUTION
IMPROVED FLUID MOTION



/ PERFORATED SOLE /

GREATER CUSHION
RESPONSIVE SHOCK ABSORPTION
IMPROVED WEIGHT DISTRIBUTION



ARIES

EN ISO 20345:2022 **CE S3S HI CI FO SR**



EU 36-48 / UK 3-13 / MP 225-315

PROTECTIVE MIDSOLE

KEVLAR
(PT) Kevlar (ES) Kevlar (FR) Kevlar (DE) Kevlar

PROTECTIVE TOE CAP

FIBERGLASS
(PT) Fibra de Vidro (ES) Fibra de Vidrio (FR) Fibre de Verre (DE) Glassfaser

SOLE

DOUBLE DENSITY PU W/ MSI
(PT) Dupla Densidade PU c/ MSI (ES) Doble Densidade PU con MSI (FR) Double Densité PU avec MSI (DE) Zweikomponenten PU mit MSI

UPPER RAW MATERIAL

NUBUCK LEATHER W/ BREATHABLE TEXTILE
(PT) Couro Nobuck com Têxtil Respirável (ES) TCuero Nobuck con Textil Respirable (FR) Cuir Nubuck avec Textile Respirant (DE) Nubukleder mit Atmungsaktivem Textil

LINING MATERIAL

BREATHABLE TEXTILE
(PT) Têxtil Respirável (ES) Textil Respirable (FR) Textile Respirant (DE) Atmungsaktiv

SOON AVAILABLE WITH WATERPROOF MEMBRANE (**S7S**) AND WITH EXTRA BREATHABLE TEXTILE (**S1PS**)



ANDROMEDA

EN ISO 20345:2022 **CE S3S HI CI FO SR**

SOON AVAILABLE WITH WATERPROOF MEMBRANE (**S7S**)



AURIGA

EN ISO 20345:2022 **CE S3S HI CI FO SR**



**QUICK
RELEASE
SYSTEM**



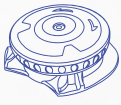
TAURUS

EN ISO 20345:2022 CE S7S HI CI FO SR



\ 1228.20 \

EU 36-48 / UK 3-13 / MP 225-315



**QUICK
RELEASE
SYSTEM**

PROTECTIVE MIDSOLE

KEVLAR
(PT) Kevlar (ES) Kevlar (FR) Kevlar (DE) Kevlar

PROTECTIVE TOE CAP

FIBERGLASS
(PT) Fibra de Vidro (ES) Fibra de Vidrio (FR) Fibre de Verre
(DE) Glassfaser

SOLE

DOUBLE DENSITY PU W/ MSI
(PT) Dupla Densidade PU c/ MSI (ES) Doble Densidade PU
con MSI (FR) Double Densité PU avec MSI (DE) Zweikompo-
nenten PU mit MSI

UPPER RAW MATERIAL

WR BREATHABLE HI-TECH MFN
(PT) Tecnologia MFN (ES) Tecnologia MFN (FR) Technologie
MFN (DE) MFN Technologie

LINING MATERIAL

BREATHABLE TEXTILE
(PT) Têxtil Respirável (ES) Textil Respirable (FR) Textile
Respirant (DE) Atmungsaktiv



**QUICK
RELEASE
SYSTEM**



\ 1028.20 \



MULTI-SECTION
INJECTION (MSI)



CLIMA CORK
SYSTEM



sympatex®



ESD
(ELECTRO-STATIC DISSIPATIVE)



FLEXIBLE



METAL FREE

SAGITTARIUS

EN ISO 20345:2022 CE S7S HI CI FO SR



\ 1241.00 \

CORVUS

EN ISO 20345:2022 CE S3S HI CI FO SR



**SLIP IN.
EASY.
FAST.**

CRATER

EN ISO 20345:2022 CE S3S HI CI FO SR

REFLECTIVE
MATERIAL



\ 1231.06 \

EU 36-48 / UK 3-13 / MP 225-315

PROTECTIVE MIDSOLE

KEVLAR
(PT) Kevlar (ES) Kevlar (FR) Kevlar (DE) Kevlar

PROTECTIVE TOE CAP

FIBERGLASS
(PT) Fibra de Vidro (ES) Fibra de Vidrio (FR) Fibre de Verre (DE) Glassfaser

SOLE

DOUBLE DENSITY PU W/ MSI
(PT) Dupla Densidade PU c/ MSI (ES) Doble Densidade PU con MSI (FR) Double Densité PU avec MSI (DE) Zweikomponenten PU mit MSI

UPPER RAW MATERIAL

VHR TEXTILE
(PT) Têxtil VHR (ES) Textil VHR (FR) Textile VHR (DE) VHR Textile

LINING MATERIAL

BREATHABLE TEXTILE
(PT) Têxtil Respirável (ES) Textil Respirable (FR) Textile Respirant (DE) Atmungsaktiv



\ 1031.06 \

CAPRICORNIUS

EN ISO 20345:2022 CE S3S HI CI FO SR



***ULTRA
RESISTANT
MATERIAL***



PISCES

EN ISO 20345:2022 CE S3S HI CI FO SR

EU 35-48 / UK 2 1/2-13 / MP 217-315

PROTECTIVE MIDSOLE

KEVLAR

(PT) Kevlar (ES) Kevlar (FR) Kevlar (DE) Kevlar

PROTECTIVE TOE CAP

FIBERGLASS

(PT) Fibra de Vidro (ES) Fibra de Vidrio (FR) Fibre de Verre (DE) Glasfaser

SOLE

DOUBLE DENSITY PU W/ MSI

(PT) Dupla Densidade PU c/ MSI (ES) Doble Densidade PU con MSI (FR) Double Densité PU avec MSI (DE) Zweikomponenten PU mit MSI

UPPER RAW MATERIAL

GUAPA UR TEXTILE

(PT) Têxtil GUAPA UR (ES) Textil GUAPA UR (FR) Textile GUAPA UR (DE) GUAPA-UR-Textil

LINING MATERIAL

BREATHABLE TEXTILE

(PT) Têxtil Respirável (ES) Textil Respirable (FR) Textile Respirant (DE) Atmungsaktiv



\ 1232.08 \



GUAPA

Developed with advanced protective technology, this upper material brings a new level of performance to safety footwear. Its innovative reinforced structure offers outstanding abrasion resistance, while remaining impressively lightweight and breathable. This ensures long-lasting protection without adding unnecessary weight, keeping the wearer comfortable throughout demanding workdays.

Engineered to withstand intense friction and heavy use, it surpasses 8,000 cycles in abrasion testing - delivering durability that professionals can rely on in tough environments.



FULL LEATHER

Choosing full leather footwear - with both the upper and lining made of leather - means choosing long-lasting comfort.

Leather naturally adapts to the shape of your foot, offers excellent breathability, and provides a softer, more supportive feel throughout the day. It's a durable, premium material that keeps your feet comfortable and protected in demanding environments.



LEO

EN ISO 20345:2011 CE S3 HI CI SRC

EU 36-48 / UK 3-13 / MP 225-315



\ 1236.01 \

PROTECTIVE MIDSOLE

KEVLAR
(PT) Kevlar (ES) Kevlar (FR) Kevlar (DE) Kevlar

PROTECTIVE TOE CAP

FIBERGLASS
(PT) Fibra de Vidro (ES) Fibra de Vidrio (FR) Fibre de Verre
(DE) Glassfaser

SOLE

DOUBLE DENSITY PU W/ MSI
(PT) Dupla Densidade PU c/ MSI (ES) Doble Densidade PU
con MSI (FR) Double Densité PU avec MSI (DE) Zweikompo-
nenten PU mit MSI

UPPER RAW MATERIAL

NATURAL SMOOTH LEATHER
(PT) Couro Natural Macio (ES) Cuero Natural Suave (FR)
Cuir Naturel Souple (DE) Natürliches Weiches Leder

LINING MATERIAL

NATURAL LEATHER
(PT) Couro Natural (ES) Cuero Natural (FR) Cuir Naturel (DE)
Natürliches Leder



\ 1236.06 \



LIBRA

EN ISO 20345:2022 CE S3S HI CI FO SR





LAVORO®
ENGINEERING LIFE



ALL. ONE.
IN. IN.
ONE. ALL.

lavoroeurope.com
DEC - 2025